



Extension  
UNIVERSITY OF WISCONSIN-MADISON

## 4-H YOUTH DEVELOPMENT

Neil Klemme

4-H Youth Development Educator

Phone: 715-561-2695

Email: [neil.klemme@wisc.edu](mailto:neil.klemme@wisc.edu)

## EXTENSION IRON COUNTY

Extension Iron County

300 Taconite Street, Suite 118

Hurley, WI 54534

Phone: 715-561-2695

Website: [iron.extension.wisc.edu](http://iron.extension.wisc.edu)

## OTHER INFORMATION

4-H Enrollment Website: [4honline.com](http://4honline.com)

4-H National Website: [4-h.org](http://4-h.org)

UW-Madison Extension: [extension.wisc.edu](http://extension.wisc.edu)

## SOCIAL MEDIA



Follow us on Facebook!  
*Iron County Wisconsin 4-H*



Follow us on Instagram!  
*Iron County Wisconsin 4-H*

# The 4-Hs



HEAD

- Problem Solving
- Decision Making
- Science & Tech



HANDS

- Team Work
- Teaching
- Leadership



HEART

- Discovering Self
- Relating to Others
- Communication



HEALTH

- Relating to Change
- Mental Health
- Physical Health



# IRON COUNTY 4-H



The **FUN** starts **HERE!**

An EEO/AA employer, University of Wisconsin-Madison Division of Extension provides equal opportunities in employment and programming, including Title VI, Title IX, the Americans with Disabilities Act (ADA) and Section 504 of the Rehabilitation Act requirements

## WHAT IS 4-H?

4-H is a non-profit youth development organization delivered by Extension offices across the United States. Youth complete hands-on projects in areas such as health, science, agriculture, arts, and civic engagement guided by adult mentors. Youth are encouraged to take on leadership roles, developing self confidence and communication skills. 4-H gives youth the opportunity to explore and pursue their passions.

**In 4-H you are free to fail, take chances, try new things, and learn from your mistakes. Youth are given the opportunity for growth and life-changing experiences.**

## LEARNING-BY-DOING

**4-H is a research-based program. Youth are given the tools they need to succeed and thrive through the four essential elements of positive youth development.**

### BELONGING

Inclusive and safe environment



### MASTERY

Engaging in learning

### INDEPENDENCE

Opportunity for self-determination

### GENEROSITY

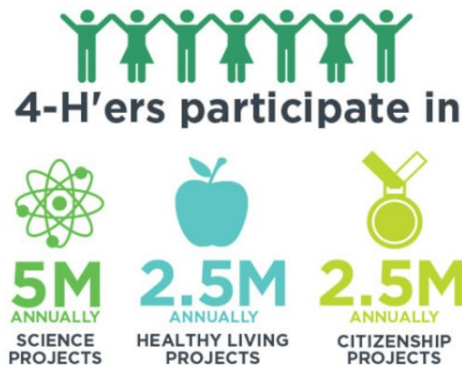
Opportunity to value & practice service for others

## PROJECTS

A project is an area of interest that the 4-H member wants to learn more about.

Youth sign up for one or more project categories and practice related skills throughout the year. There are many categories to choose from, including art, livestock, foods & nutrition, cross country skiing, STEM, and many more!

The possibilities are endless! Many 4-H members bring their completed projects as an entry to the Iron County Fair.



## ACTIVITIES

### OPPORTUNITY FOR INVOLVEMENT

Iron County 4-H offers many activities year round. Members have the option to participate at the club, county, state and national level. Some of the many Iron County 4-H activities include:

- Club activities
- Summer Day Camps
- County Fair Participation
- Iron County Summer Youth Camp
- Iron County Outpost Camp
- SISU Endurance Team (SET) cc ski, running and bike clubs
- State and National Educational Experiences

## HOW TO JOIN

Visit [www.4honline.com](http://www.4honline.com) to register. Scroll down to access the Wisconsin portal. You will re-register at the beginning of every 4-H year in September to join or re-enroll. For enrollment instructions, visit: <https://iron.extension.wisc.edu/4h/4-h-online-enrollment/>.

New members and leaders can join at any time, but to exhibit at the Iron County Fair, you must enroll by February 1st. Please contact our 4-H Youth Development Educator, Neil Klemme, at [neil.klemme@wisc.edu](mailto:neil.klemme@wisc.edu) or call the Extension Iron County office at 715-561-2695 for more information.